

Smart-clamp (endoscope-phone adapter)

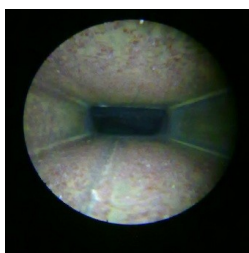
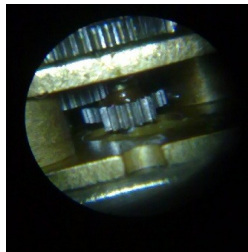
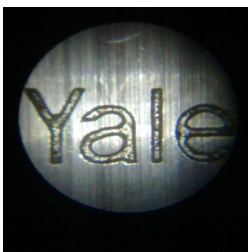
The easiest and most cost effective way of taking video and still images through your endoscope.



The RVA Smart-clamp is the original UNIVERSAL endoscope mobile phone adapter.

A phone/smart-phone handset is held in the device by 2 clamps fitted with high quality neoprene foam pads. Once fastened, a central eyepiece holder section may be moved horizontally to set a small window directly in front of the camera lens. Finally the endoscope eyepiece is secured into the holder.

Applications include; Cavity wall inspections, safe engineer's scopes and automotive borescope inspections.



- **Universal – works with most camera phones and smart phones**
- **Perfect for use with cavity wall void endoscopes, safe engineer's scopes and automotive borescope inspections**
- **Designed and made in the UK**

Technical Specifications

Construction material – brushed finish black Acetal plastic and stainless steel.

Accepts handsets of up to 75mm width

Device accepts endoscopes with an industry standard 32mm diameter eyepiece.

*The Smart-Clamp will interface your handset with your endoscope eyepiece, but the resulting images are entirely dependant on the quality of your phone camera and the type and diameter of your endoscope.

As a general rule, the larger the diameter of the endoscope, the larger the image on screen.

Tips for evaluation of your endoscope and handset

1. Try holding your phone camera up to your endoscope eyepiece. Set zoom to desired image size (usually max) and make adjustments to the light. Re-focus your endoscope. If you find a useable image may be possible, then the RVA Smart-Clamp could work for you.

2. Video vs Stills?

Try setting your phone camera to video mode. For many handsets the video image is larger than the image in still picture mode.

Furthermore if your phone camera has zoom within video mode you should be able to achieve a full size screen image.